

Stonebrook

Elevation A | 2563 sq.ft



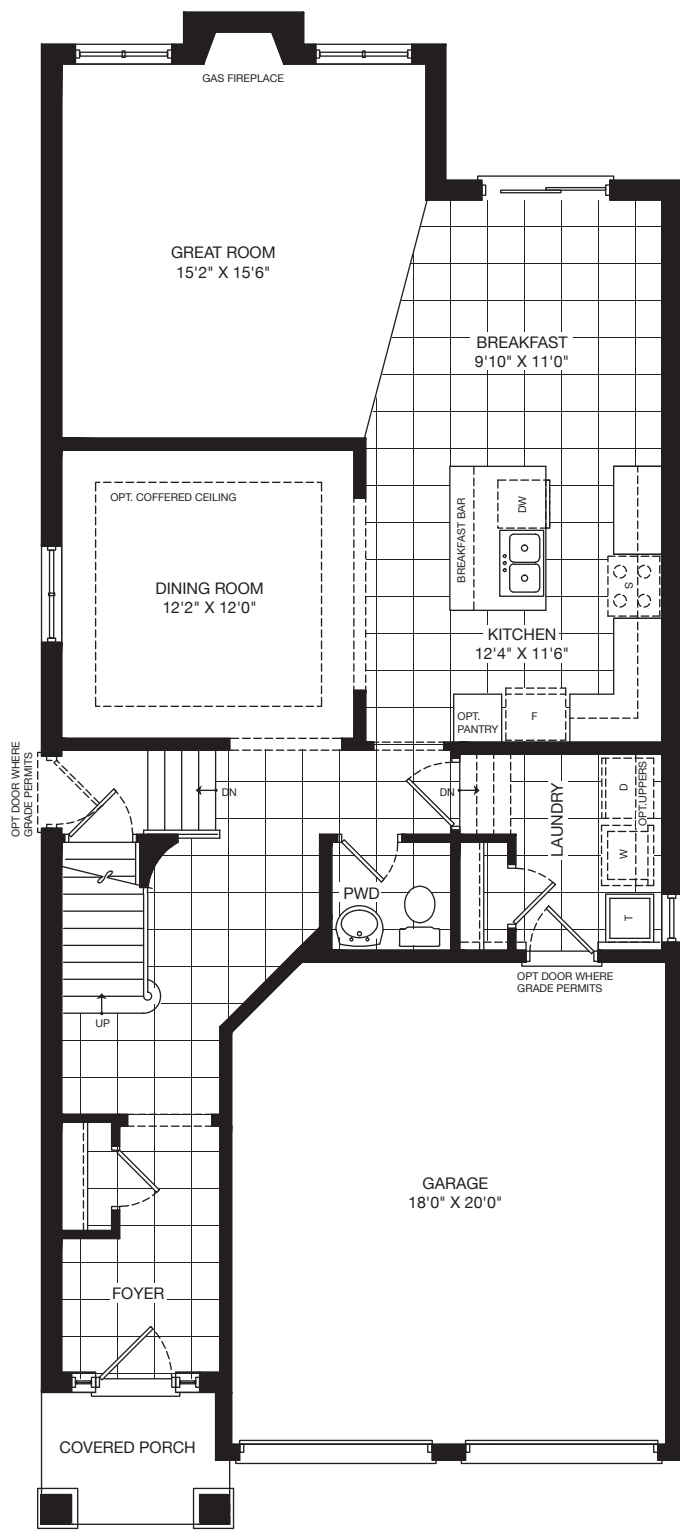
Stonebrook

Elevation B | 2563 sq.ft

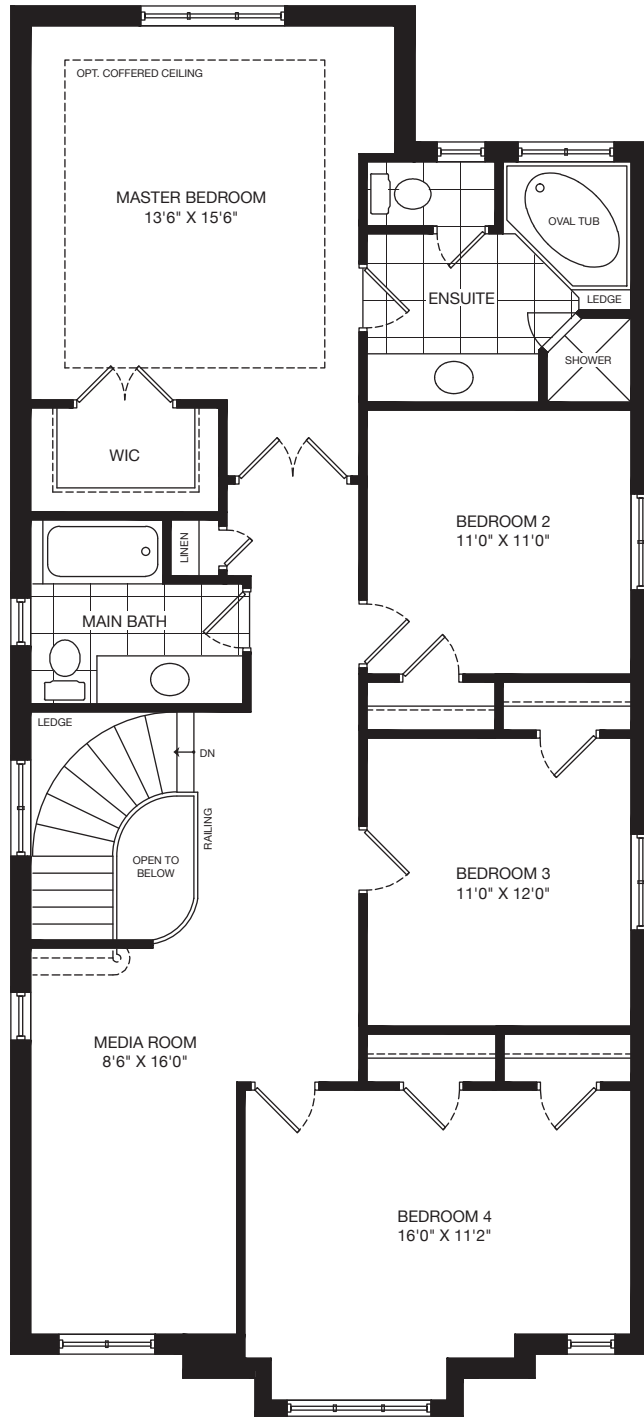


Elevation C

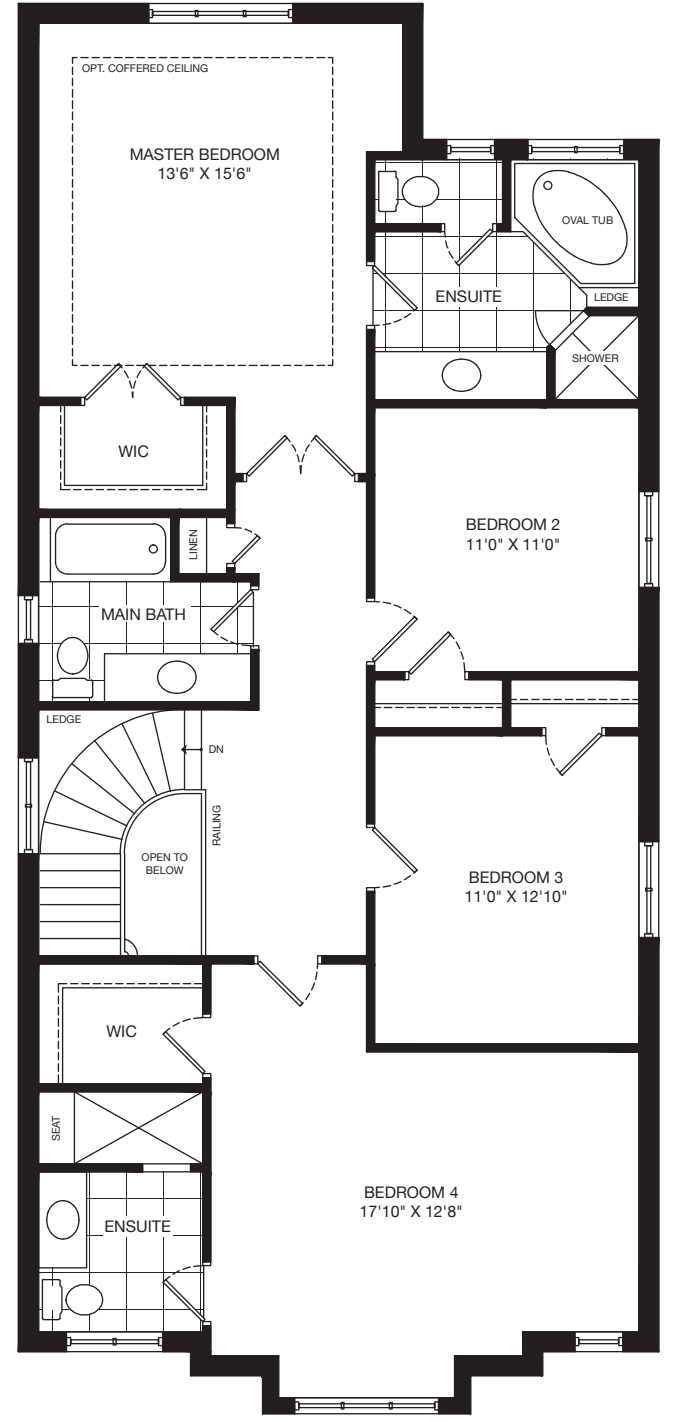




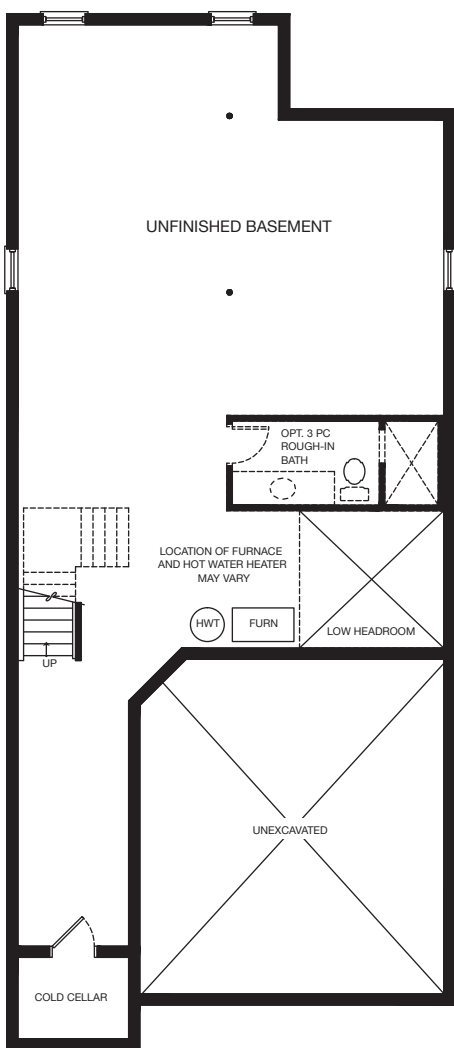
Main Floor



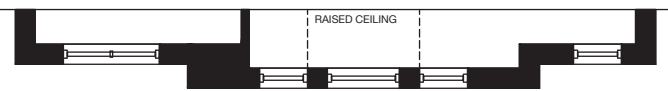
Second Floor Elevation 'A'



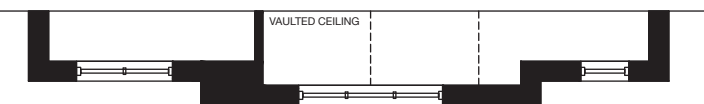
Alt. Second Floor Elevation 'A'



Basement



Partial Second Floor Elevation 'B'



Partial Second Floor Elevation 'C'

Stonebrook

2563 sq.ft

